

Width: 70'
Depth: 63'

Whiddon C

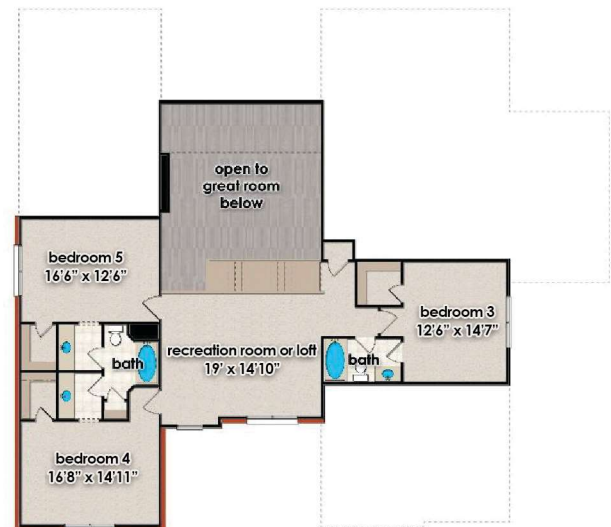
Heated Area: 3,910
4 or 5 bedrooms
3 1/2 or 4 1/2 baths



Front Elevation



Main Level Floor
2,648 sf



Upper Level Floor
1,262 sf

for illustrative purposes only. design and prices are subject to change. reproduction without permission is prohibited.

3058 Leeman Ferry Road
Suite G
Huntsville, Alabama 35801



Phone: 256.564.5960
Website:
www.pearsonhomesinc.com