

Width: 70'
Depth: 63'

Whiddon B

Heated Area: 3,910
4 or 5 bedrooms
3 1/2 or 4 1/2 baths



Front Elevation



Main Level Floor

2,648 sf

for illustrative purposes only. design and prices are subject to change. reproduction without permission is prohibited.

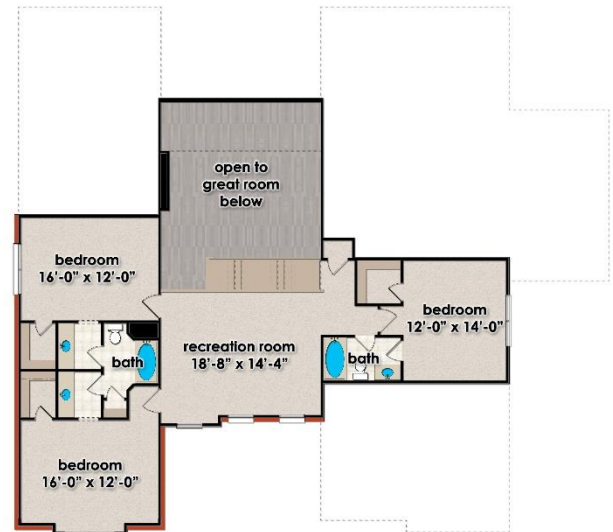
3058 Leeman Ferry Road
Suite G
Huntsville, Alabama 35801



Version C



Version B



Upper Level Floor

1262 sf

Phone: 256.564.5960

Website:

www.pearsonhomesinc.com

